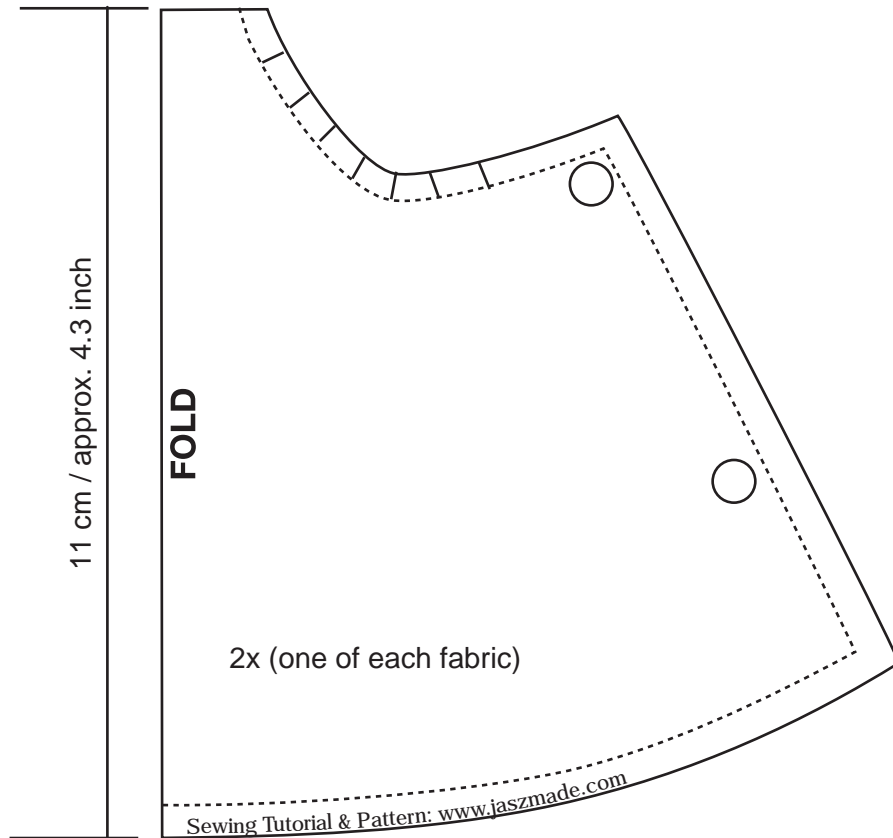


1x, best use ribbon



fits Blythe and similar

Difficulty: **EASY**

Find instructions for this *jaszmade pattern and sewing tutorial on

<http://www.jaszmade.com/blog/2009/10/super-easy-reversible-dress-for-blythe/>

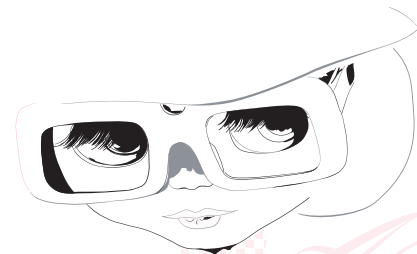
Please note:

You are not allowed to sell and/or translate this pattern into another language for selling; including publishing on the internet without my permission. You can ask me everything, I am a human like you and I love to be respected like you love.

You are welcome to add a link to my resource and / or spread the word about *jaszmade sewing patterns for Blythe.

You are allowed to sew dresses after *jaszmade patterns to sell them on your etsy or wherever but please never copy *jaszmade or other designer's stuff. Make up your own mind, you are a star yourself!

Dolly Love,
Jasz



Blog: <http://www.jaszmade.com/blog>

Flickr: <http://www.flickr.com/photos/blender70/>

Etsy: <http://blender70.etsy.com>

**jaszmade!*
Dolly Fashion